



JIBC

EMERGENCY MANAGEMENT DIVISION

ESS



Introduction to Group Lodging

July 2015

Welcome

- Housekeeping
- Forms and paperwork
- Introductions
 - Your name
 - Your community/agency
 - One skill/strength you're bringing to group lodging
- Participant guide
- Icebreaker



Introduction

- Course
 - Introduction
 - Goal
 - Description
 - Learning outcomes
 - Prerequisite
 - Recommended Course
 - Agenda



Group Lodging Services

- What is group lodging?



Group Lodging Services

- What services are provided?
- When is one opened?
- What is the link between group lodging and reception centres?



Group Lodging Services

- Module 1 review
 - What is group lodging
 - Types of services
 - When is group lodging opened



Group Lodging Services

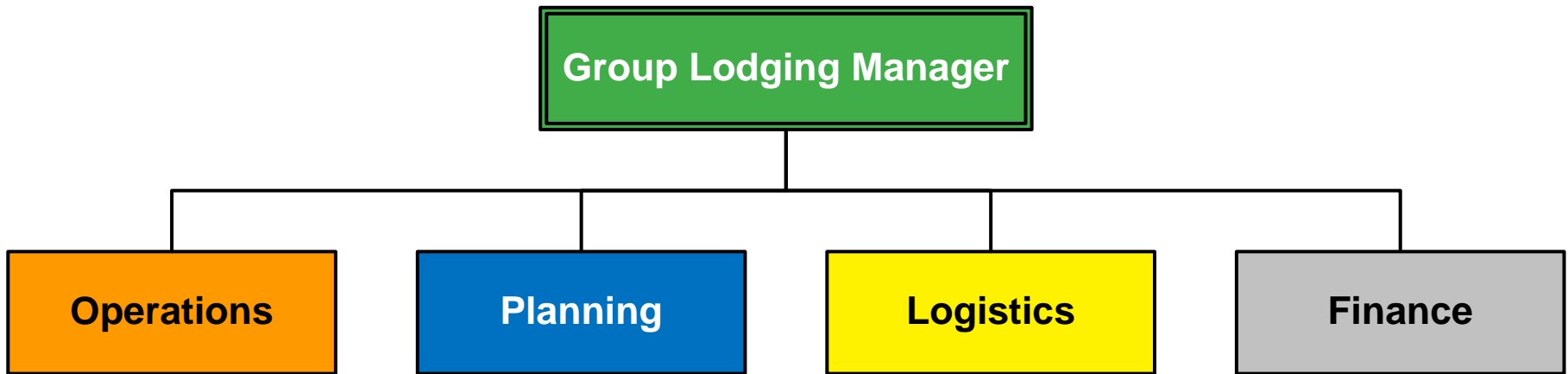
Activity – Matching Services

- Participant guide – end of Module 1
- Assign letter(s) to the space provided for each service. Each choice may be used more than once
- 5 minutes



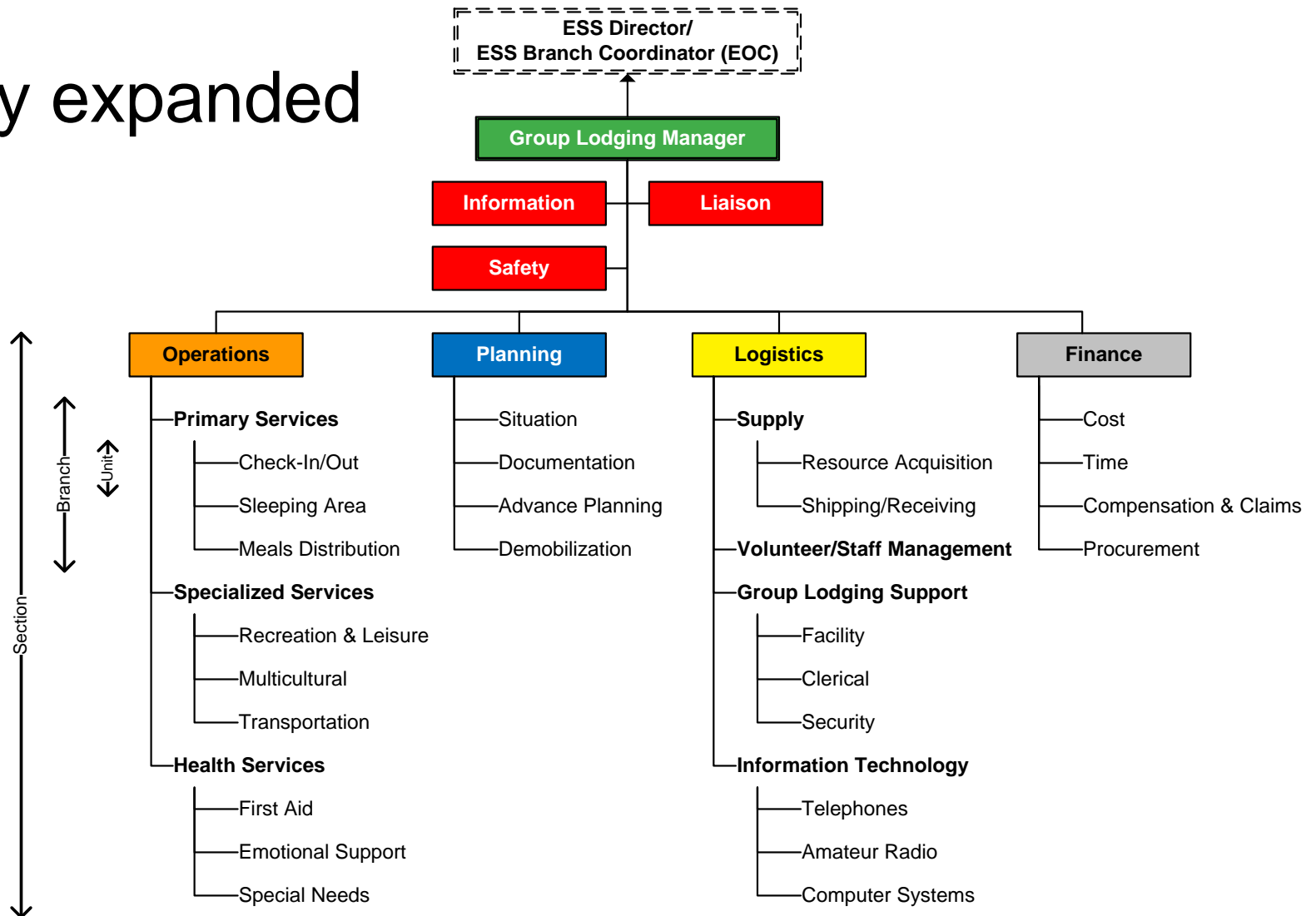
Group Lodging Structure

- 5 primary management functions
- Functions list



Group Lodging Structure

- Fully expanded



Group Lodging Structure

Activity – Matching Functions & Roles

- Review task cards
- Post tasks/activities below the most appropriate GL function
- ***Hint:*** Reference Tables 2 – 7 in the guide
- 15 minutes
- As a larger group, review functions and make adjustments as needed



Group Lodging Structure

- Module 2 review
 - 5 primary management functions
 - Group lodging structure
 - Roles and responsibilities



Working in Group Lodging

- Call out
- Personal preparedness
- Reporting to work



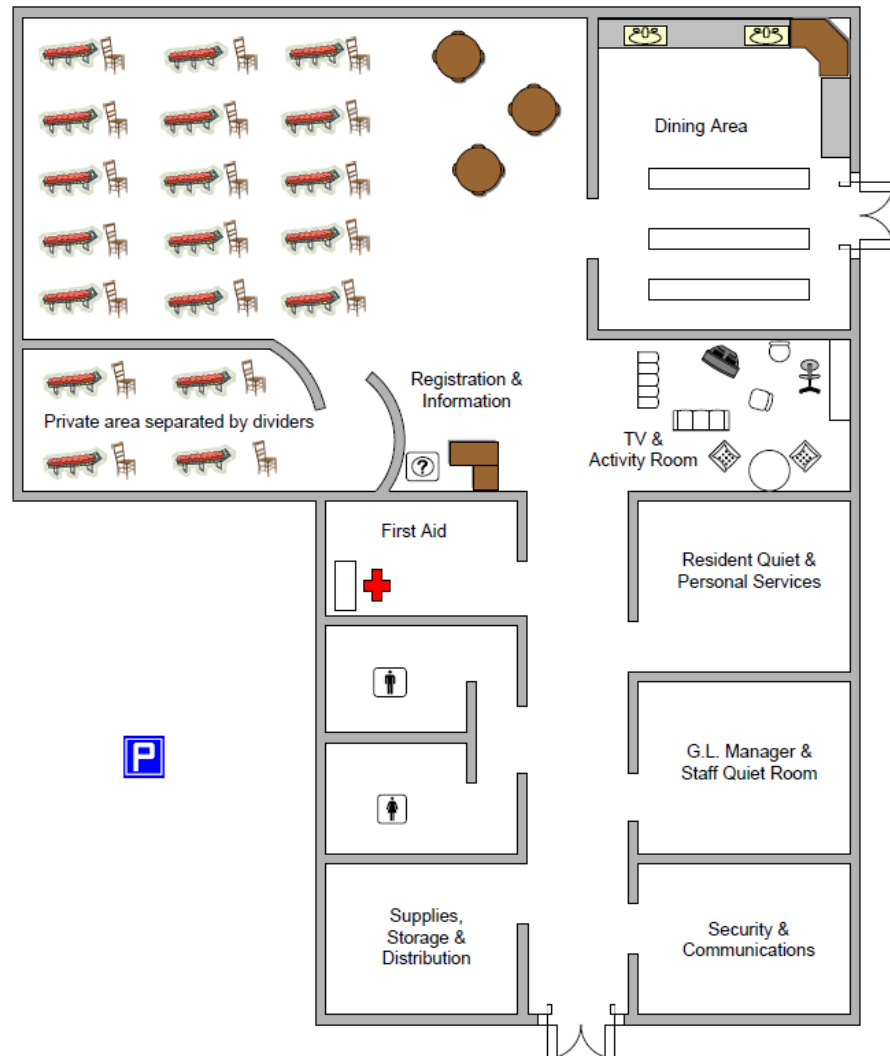
Working in Group Lodging

- Group lodging set-up
 - Group lodging kit
 - Additional equipment and supplies
 - Function/service areas



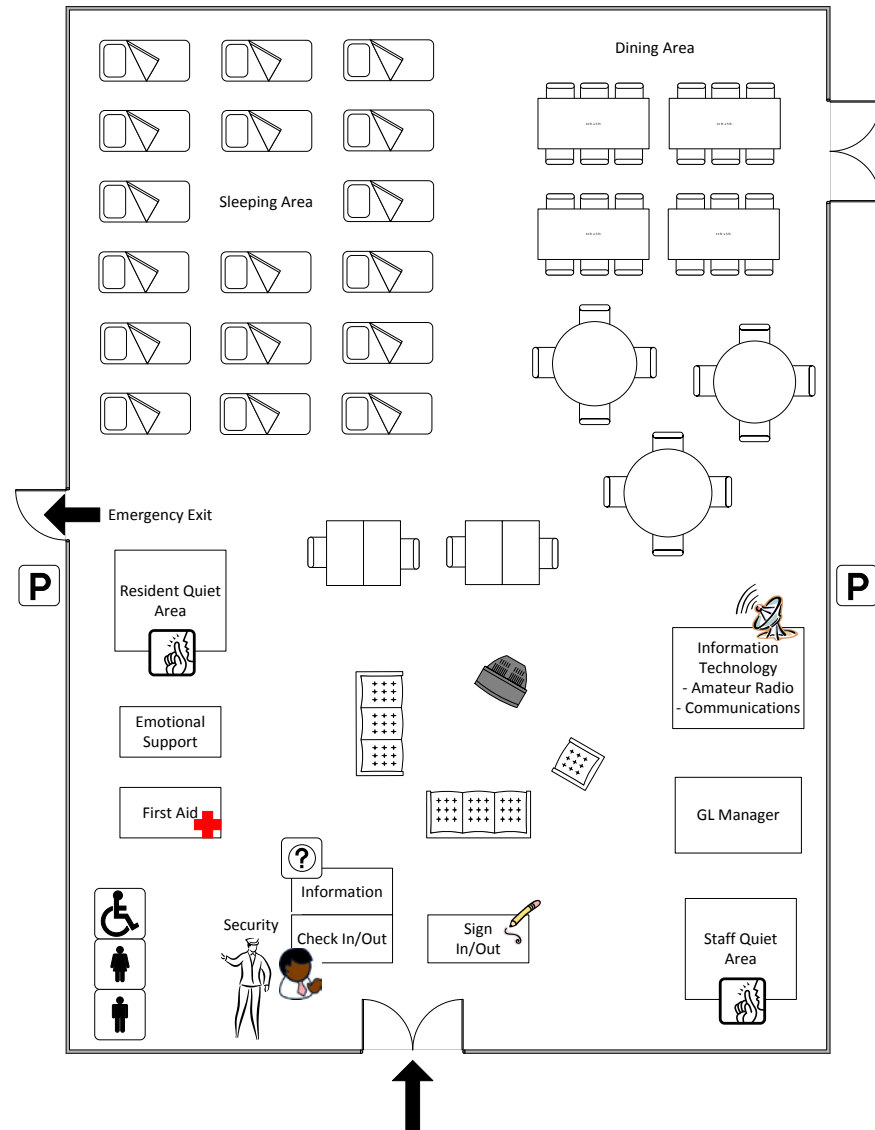
Working in Group Lodging

- Group lodging set-up
 - Sample floor plan for facility *with* rooms



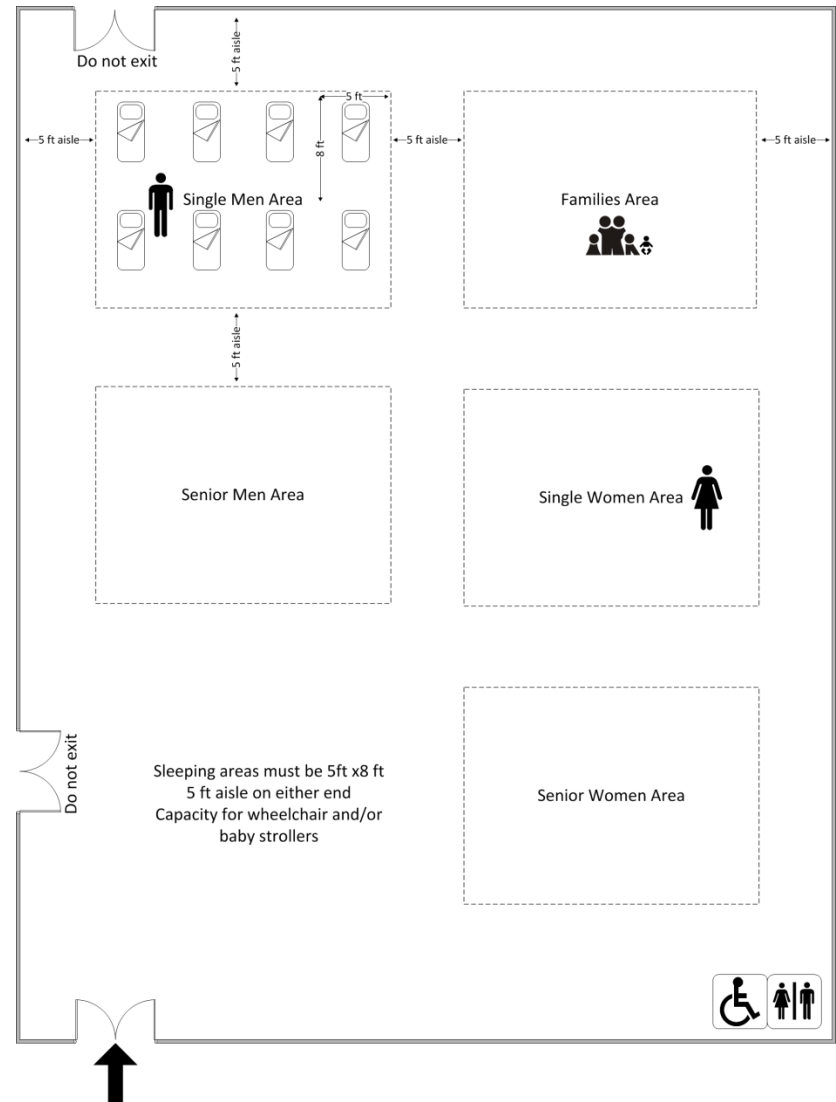
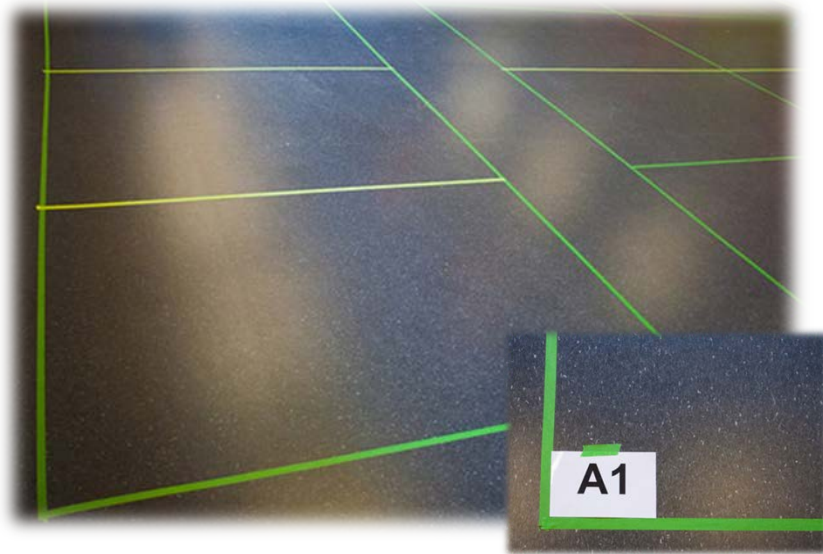
Working in Group Lodging

- Group lodging set-up
 - Sample floor plan for facility *without* rooms



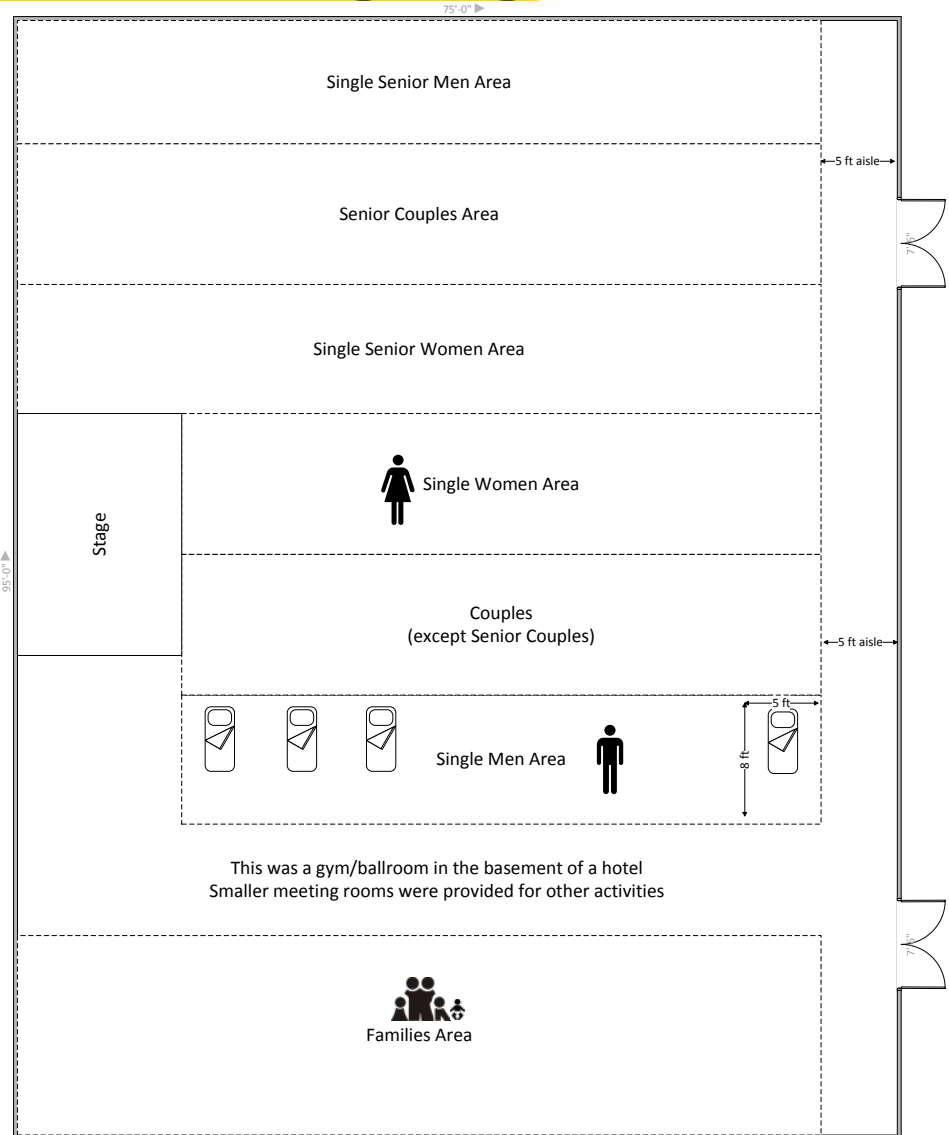
Working in Group Lodging

- Group lodging set-up
 - Sample sleeping area set up (NSEMO 2009)



Working in Group Lodging

- Group lodging set-up
 - Sample sleeping area set up (Kamloops 2003)



Working in Group Lodging

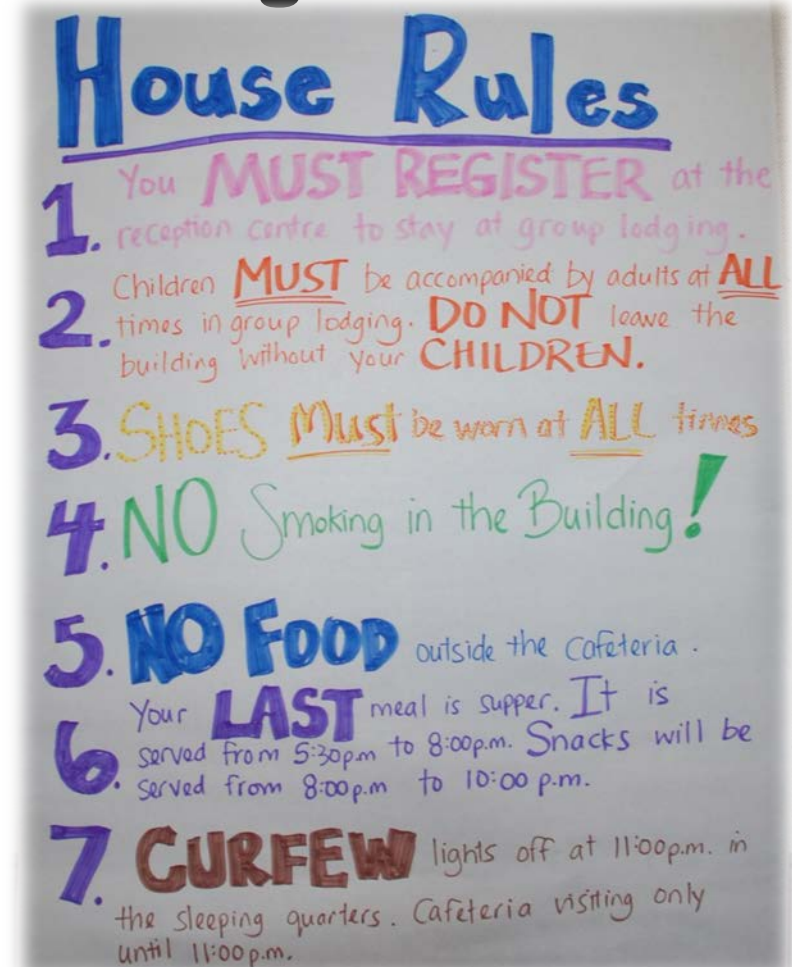
- Guidelines
 - Adapted from the 2010 ESS Regional Group Lodging Field Guide
- Demobilizing



Working in Group Lodging

Activity – Addressing Challenges

- Participant guide – end of Module 3
- Write your answers on a flip chart
- **Hint:** Use guidelines
- 15 minutes
- Share with the class



Working in Group Lodging

- Module 3 review
 - Setting-up
 - Dealing with common challenges



Course Wrap-up

- Course summary
- Review learning outcomes
- Course debriefing
 - Comments
 - Questions
- Course assessment
- Course evaluation survey
- Sign out on Task Registration Form



Thank you!